



# Oasis Platinum Range

Dream Bigger. Relax Better.

Find your nearest dealer at  
[oasisspas.com.au](http://oasisspas.com.au)







## TREAT YOURSELF TO A BETTER WAY OF LIVING. YOU DESERVE IT!

### CUSTOMER SUPPORT COMMITMENT

Every Oasis Spa comes with three levels of support for your total piece of mind. Oasis Spas are built and backed by a major international manufacturer with offices in Australia, Europe and Asia.

The national Oasis network provides professional in-house, after sales support, help and advice to our network of long-standing retailers to ensure serviceability is achieved to maintain the highest level of support.

The accessibility of your local retail outlet offers active support, service, parts and knowledgeable advice to you after the purchase of your Oasis Spa.

### PREMIUM INTERNATIONAL SPAS

Oasis Spas is a premium quality international brand sold in over 40 countries. Our spas are built to last with premium components and superior shell structure. Our Power Saver Technology will save you thousands over the life of your spa and our Easy Care Technology makes maintenance simple.

Oasis Spas are quieter, roomier and more comfortable, and with targeted hydrotherapy and mood lighting, they offer the ultimate spa experience.

If you're looking for a premium spa at an affordable price, Oasis Platinum Series Spas offer unbeatable value for the discerning spa buyer.

### THE ULTIMATE LIFESTYLE

We all have busy lives and seem to have less quality time for ourselves and our families. One way to improve your lifestyle is owning your own spa - your own private oasis to which you can escape and spend quality time with your partner and family.

Relax, melt away your daily stresses and enjoy a soothing massage in the privacy of your own home any time you want.



OASIS HAS GLOBAL STRENGTH  
WITH A NETWORK OF 40 COUNTRIES  
AROUND THE WORLD

# HYDROTHERAPY AND YOUR HEALTH

Understanding the therapeutic benefits of hydrotherapy and how it relaxes the body and rejuvenates the mind is what makes Oasis Spas a leader within the market. Hydrotherapy is the use of water in the treatment of many conditions, including arthritis and related rheumatic complaints.

Heated water above 33° can help reduce rheumatic aches and pains. Providing heat and blood flow to the body also improves overall health, and creates a noticeable difference to your moods and well being.

Water's zero-impact environment is ideal for recovering from an injury. The weightlessness means you can get an intense massage while relieving joint stress and pressure.

Oasis Spas combine the proven benefits of hydrotherapy and the stimulation provided by hydro massage - using targeted water jets to loosen muscles and stimulate blood flow.

Oasis Spas lead the way in hydro-therapy and massage technology and also harness lighting and music to create a complete relaxation experience that you'll look forward to every day.

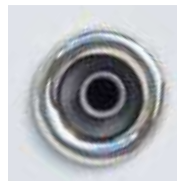
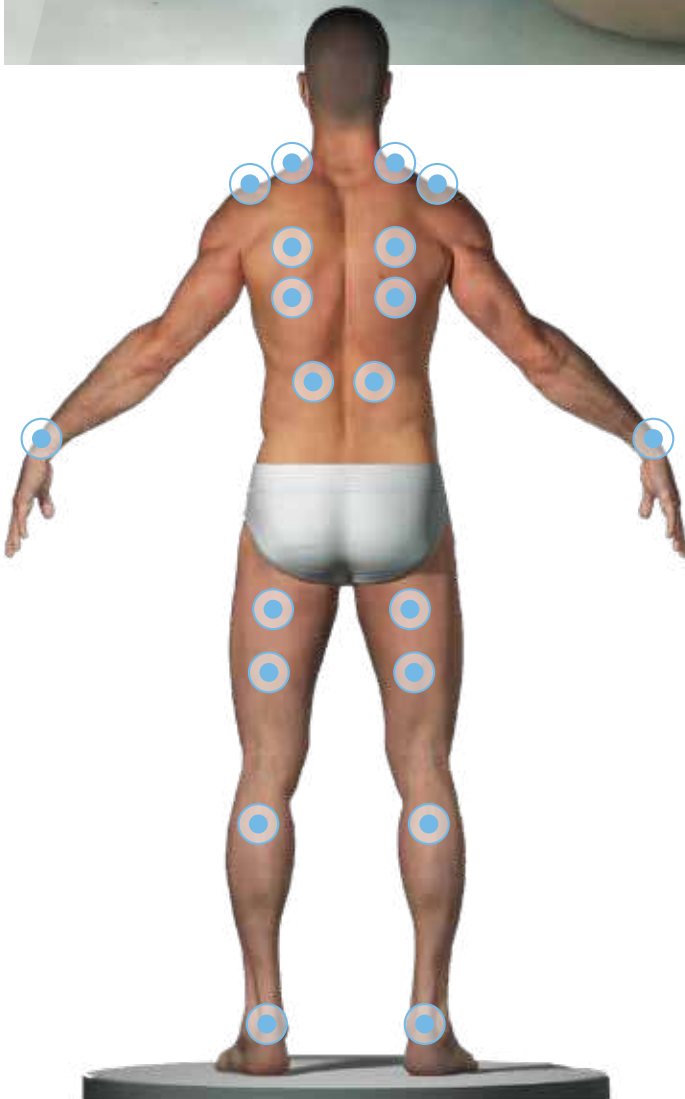


# A BETTER MASSAGE EVERYTIME

Creating the perfect massage is what Oasis do best. Through years of rigorous flow testing, using various pump and jet combinations, Oasis have combined the ultimate configurations to ensure that you receive an optimised massage experience in every Oasis Spa.



- Broad stream jets for a smoother, more enjoyable massage.
- Every seat offers a different massage experience.
- Jets targeted to specific muscle groups for maximum benefit.
- Neck therapy to relieve neck and shoulder tension.
- Jets can be swapped around to tailor your massage experience.
- Recliner lounges with up to 16 jets for a full body massage.



## SOLE THERAPY JET

A high powered, broad stream jet that kids love to play with and adults love for its ability to provide a powerful deep tissue massage.



## ACCU-PRESSURE BACK MASSAGE

A large number of accu-pressure jets are used in one seat to precisely target pressure points in the back and lower neck.



## NECK AND SHOULDER THERAPY

In this customized seat, jets are perfectly positioned to direct water flow downwards to relieve stiff neck and shoulder muscles.



## FULL BODY MASSAGE RECLINER

Experience the pleasure of having up to 16 jets massage your entire body all at once - from your neck to your toes.



## PARADISE

### CLASSIC MODEL

<b>SEATING</b>	3
<b>PUMPS</b>	
<b>MASSAGE PUMP/S</b>	1 x 3hp (4.8bhp)
<b>AIR MASSAGE PUMP</b>	400W Preheated Blower
<b>FILTRATION PUMP</b>	1 x Power Saver WTC
<b>JETS</b>	
<b>TOTAL JETS</b>	46
<b>WATER JETS</b>	30
<b>AIR JETS</b>	16
<b>SOLE THERAPY JETS</b>	N/A
<b>FILTRATION &amp; SANITISATION</b>	
<b>FILTRATION</b>	100sqft
<b>SANITISATION</b>	Ozone Mixing Chamber
<b>CONTROLS</b>	
<b>CONTROLLER</b>	Gecko YE5 K.1001
<b>HEATER</b>	3KW Stainless steel
<b>FEATURES</b>	
<b>INSULATION</b>	7-Layer Insulation
<b>WATERFALLS</b>	3 x Roman
<b>LIGHTING</b>	1 x Large & Waterlevel LED's
<b>STAINLESS STEEL JET TRIMS</b>	Standard
<b>LOCKABLE HARDCOVER</b>	Luxury
<b>BASE</b>	Solid ABS Base
<b>POWER SUPPLY</b>	15 Amp
<b>OPTIONAL EXTRAS</b>	

### DIMENSIONS

2000 x 1640 x 820mm

### LITRES

590L

### DRY WEIGHT

240kg

### TOTAL WEIGHT

830kg

### MINIMUM POWER

15 Amp Classic

15

YEAR STRUCTURAL  
WARRANTY

5

YEAR ACRYLIC  
WARRANTY

5

YEAR JET  
WARRANTY

STEPS | ULTRA ZONE | WI FI | HI-FI WI-FI STEREO | HEAT PUMP



## MAUI

	HYDRO MODEL
<b>SEATING</b>	4
<b>PUMPS</b>	
MASSAGE PUMP/S	2 x 3hp (4.8bhp)
AIR MASSAGE PUMP	400W Preheated Blower
FILTRATION PUMP	1 x Power Saver WTC
<b>JETS</b>	
TOTAL JETS	60
WATER JETS	42
AIR JETS	17
SOLE THERAPY JETS	1
<b>FILTRATION &amp; SANITISATION</b>	
FILTRATION	100sqft
SANITISATION	Ozone Mixing Chamber
<b>CONTROLS</b>	
CONTROLLER	Gecko YE5 K.1001
HEATER	3KW Stainless steel
<b>FEATURES</b>	
INSULATION	7-Layer Insulation
WATERFALLS	3 x Roman
LIGHTING	1 x Large & Waterlevel LED's
STAINLESS STEEL JET TRIMS	Standard
LOCKABLE HARDCOVER	Luxury
BASE	Solid ABS Base
POWER SUPPLY	32 Amp
<b>OPTIONAL EXTRAS</b>	

### DIMENSIONS

2000 x 1700 x 820mm

### LITRES

540L

### DRY WEIGHT

304kg

### TOTAL WEIGHT

844kg

### MINIMUM POWER

32 Amp Hydro

15

YEAR STRUCTURAL  
WARRANTY

5

YEAR ACRYLIC  
WARRANTY

5

YEAR JET  
WARRANTY

STEPS | ULTRA ZONE | WI FI | HI-FI WI-FI STEREO | HEAT PUMP



## HAWAIIAN

	CLASSIC MODEL	HYDRO MODEL
<b>SEATING</b>	6	6
<b>PUMPS</b>		
<b>MASSAGE PUMP/S</b>	1 x 3hp (4.8bhp)	2 x 3hp (4.8bhp)
<b>AIR MASSAGE PUMP</b>	400W Preheated Blower	400W Preheated Blower
<b>FILTRATION PUMP</b>	1 x Power Saver WTC	1 x Power Saver WTC
<b>JETS</b>		
<b>TOTAL JETS</b>	40	50
<b>WATER JETS</b>	28	37
<b>AIR JETS</b>	12	12
<b>SOLE THERAPY JETS</b>	N/A	1
<b>FILTRATION &amp; SANITISATION</b>		
<b>FILTRATION</b>	100sqft	100sqft
<b>SANITISATION</b>	Ozone Mixing Chamber	Ozone Mixing Chamber
<b>CONTROLS</b>		
<b>CONTROLLER</b>	Gecko YE5 K.1001	Gecko YE5 K.1001
<b>HEATER</b>	3KW Stainless steel	3KW Stainless steel
<b>FEATURES</b>		
<b>INSULATION</b>	7-Layer Insulation	7-Layer Insulation
<b>WATERFALLS</b>	3 x Roman	3 x Roman
<b>LIGHTING</b>	1 x Large & Waterlevel LED's	1 x Large & Waterlevel LED's
<b>STAINLESS STEEL JET TRIMS</b>	Standard	Standard
<b>LOCKABLE HARDCOVER</b>	Luxury	Luxury
<b>BASE</b>	Solid ABS Base	Solid ABS Base
<b>POWER SUPPLY</b>	15 Amp	32 Amp
<b>OPTIONAL EXTRAS</b>		

### DIMENSIONS

2000 x 2000 x 820mm

### LITRES

960L

### DRY WEIGHT

334kg

### TOTAL WEIGHT

1294kg

### MINIMUM POWER

15 Amp Classic  
32 Amp Hydro

15

YEAR STRUCTURAL WARRANTY

5

YEAR ACRYLIC WARRANTY

5

YEAR JET WARRANTY

STEPS | ULTRA ZONE | WI FI | HI-FI WI-FI STEREO | HEAT PUMP





## MIAMI

	CLASSIC MODEL	HYDRO MODEL
<b>SEATING</b>	5	5
<b>PUMPS</b>		
<b>MASSAGE PUMP/S</b>	1 x 3hp (4.8bhp)	2 x 3hp (4.8bhp)
<b>AIR MASSAGE PUMP</b>	400W Preheated Blower	400W Preheated Blower
<b>FILTRATION PUMP</b>	1 x Power Saver WTC	1 x Power Saver WTC
<b>JETS</b>		
<b>TOTAL JETS</b>	46	59
<b>WATER JETS</b>	28	40
<b>AIR JETS</b>	18	18
<b>SOLE THERAPY JETS</b>	N/A	1
<b>FILTRATION &amp; SANITISATION</b>		
<b>FILTRATION</b>	100sqft	100sqft
<b>SANITISATION</b>	Ozone Mixing Chamber	Ozone Mixing Chamber
<b>CONTROLS</b>		
<b>CONTROLLER</b>	Gecko YE5 K.1001	Gecko YE5 K.1001
<b>HEATER</b>	3KW Stainless steel	3KW Stainless steel
<b>FEATURES</b>		
<b>INSULATION</b>	7-Layer Insulation	7-Layer Insulation
<b>WATERFALLS</b>	3 x Roman	3 x Roman
<b>LIGHTING</b>	1 x Large & Waterlevel LED's	1 x Large & Waterlevel LED's
<b>STAINLESS STEEL JET TRIMS</b>	Standard	Standard
<b>LOCKABLE HARDCOVER</b>	Luxury	Luxury
<b>BASE</b>	Solid ABS Base	Solid ABS Base
<b>POWER SUPPLY</b>	15 Amp	32 Amp
<b>OPTIONAL EXTRAS</b>		

### DIMENSIONS

2000 x 2000 x 820mm

### LITRES

960L

### DRY WEIGHT

334kg

### TOTAL WEIGHT

1294kg

### MINIMUM POWER

15 Amp Classic  
32 Amp Hydro

15

YEAR STRUCTURAL WARRANTY

5

YEAR ACRYLIC WARRANTY

5

YEAR JET WARRANTY

STEPS | ULTRA ZONE | WI FI | HI-FI WI-FI STEREO | HEAT PUMP



## BYRON BAY

	HYDRO MODEL
<b>SEATING</b>	5
<b>PUMPS</b>	
MASSAGE PUMP/S	2 x 3hp (4.8bhp)
AIR MASSAGE PUMP	400W Preheated Blower
FILTRATION PUMP	1 x Power Saver WTC
<b>JETS</b>	
TOTAL JETS	63
WATER JETS	44
AIR JETS	18
SOLE THERAPY JETS	1
<b>FILTRATION &amp; SANITISATION</b>	
FILTRATION	100sqft
SANITISATION	Ozone Mixing Chamber
<b>CONTROLS</b>	
CONTROLLER	Gecko YE5 K.1001
HEATER	3KW Stainless steel
<b>FEATURES</b>	
INSULATION	7-Layer Insulation
WATERFALLS	3 x Roman
LIGHTING	1 x Large & Waterlevel LED's
STAINLESS STEEL JET TRIMS	Standard
LOCKABLE HARDCOVER	Luxury
BASE	Solid ABS Base
POWER SUPPLY	32 Amp
<b>OPTIONAL EXTRAS</b>	

STEPS | ULTRA ZONE | WI FI | HI-FI WI-FI STEREO | HEAT PUMP

### DIMENSIONS

2120 x 2120 x 920mm

### LITRES

1160L

### DRY WEIGHT

376kg

### TOTAL WEIGHT

1536kg

### MINIMUM POWER

32 Amp Hydro

15

YEAR STRUCTURAL WARRANTY

5

YEAR ACRYLIC WARRANTY

5

YEAR JET WARRANTY



## CALYPSO

	HYDRO MODEL	PRO MODEL
<b>SEATING</b>	7	7
<b>PUMPS</b>		
<b>MASSAGE PUMP/S</b>	2 x 3hp (4.8bhp)	3 x 3hp (4.8bhp)
<b>AIR MASSAGE PUMP</b>	400W Preheated Blower	400W Preheated Blower
<b>FILTRATION PUMP</b>	1 x Power Saver WTC	1 x Power Saver WTC
<b>JETS</b>		
<b>TOTAL JETS</b>	59	68
<b>WATER JETS</b>	44	53
<b>AIR JETS</b>	14	14
<b>SOLE THERAPY JETS</b>	1	1
<b>FILTRATION &amp; SANITISATION</b>		
<b>FILTRATION</b>	100sqft	100sqft
<b>SANITISATION</b>	Ozone Mixing Chamber	Ozone Mixing Chamber
<b>CONTROLS</b>		
<b>CONTROLLER</b>	Gecko YE5 K.1001	Gecko YE5 K.1001
<b>HEATER</b>	3KW Stainless steel	3KW Stainless steel
<b>FEATURES</b>		
<b>INSULATION</b>	7-Layer Insulation	7-Layer Insulation
<b>WATERFALLS</b>	3 x Roman	3 x Roman
<b>LIGHTING</b>	1 x Large & Waterlevel LED's	1 x Large & Waterlevel LED's
<b>STAINLESS STEEL JET TRIMS</b>	Standard	Standard
<b>LOCKABLE HARDCOVER</b>	Luxury	Luxury
<b>BASE</b>	Solid ABS Base	Solid ABS Base
<b>POWER SUPPLY</b>	32 Amp	32 Amp
<b>OPTIONAL EXTRAS</b>		

### DIMENSIONS

2300 x 2300 x 920mm

### LITRES

1550L

### DRY WEIGHT

430kg

### TOTAL WEIGHT

1980kg

### MINIMUM POWER

32 Amp Hydro  
32 Amp Pro

15

YEAR STRUCTURAL  
WARRANTY

5

YEAR ACRYLIC  
WARRANTY

5

YEAR JET  
WARRANTY

STEPS | ULTRA ZONE | WI FI | HI-FI WI-FI STEREO | HEAT PUMP



## JAMAICAN

### HYDRO MODEL

SEATING	5
<b>PUMPS</b>	
MASSAGE PUMP/S	2 x 3hp (4.8bhp)
AIR MASSAGE PUMP	400W Preheated Blower
FILTRATION PUMP	1 x Power Saver WTC
<b>JETS</b>	
TOTAL JETS	68
WATER JETS	48
AIR JETS	19
SOLE THERAPY JETS	1
<b>FILTRATION &amp; SANITISATION</b>	
FILTRATION	100sqft
SANITISATION	Ozone Mixing Chamber
<b>CONTROLS</b>	
CONTROLLER	Gecko YE5 K.1001
HEATER	3KW Stainless steel
<b>FEATURES</b>	
INSULATION	7-Layer Insulation
WATERFALLS	3 x Roman
LIGHTING	1 x Large & Waterlevel LED's
STAINLESS STEEL JET TRIMS	Standard
LOCKABLE HARDCOVER	Luxury
BASE	Solid ABS Base
POWER SUPPLY	32 Amp
<b>OPTIONAL EXTRAS</b>	

### DIMENSIONS

2300 x 2120 x 920mm

### LITRES

1390L

### DRY WEIGHT

413kg

### TOTAL WEIGHT

1803kg

### MINIMUM POWER

32 Amp Hydro

15

YEAR STRUCTURAL  
WARRANTY

5

YEAR ACRYLIC  
WARRANTY

5

YEAR JET  
WARRANTY

STEPS | ULTRA ZONE | WI FI | HI-FI WI-FI STEREO | HEAT PUMP



## RIVIERA

	HYDRO MODEL
<b>SEATING</b>	6
<b>PUMPS</b>	
MASSAGE PUMP/S	2 x 3hp (4.8bhp)
AIR MASSAGE PUMP	400W Preheated Blower
FILTRATION PUMP	1 x Power Saver WTC
<b>JETS</b>	
TOTAL JETS	64
WATER JETS	49
AIR JETS	14
SOLE THERAPY JETS	1
<b>FILTRATION &amp; SANITISATION</b>	
FILTRATION	100sqft
SANITISATION	Ozone Mixing Chamber
<b>CONTROLS</b>	
CONTROLLER	Gecko YE5 K.1001
HEATER	3KW Stainless steel
<b>FEATURES</b>	
INSULATION	7-Layer Insulation
WATERFALLS	3 x Roman
LIGHTING	1 x Large & Waterlevel LED's
STAINLESS STEEL JET TRIMS	Standard
LOCKABLE HARDCOVER	Luxury
BASE	Solid ABS Base
POWER SUPPLY	32 Amp
<b>OPTIONAL EXTRAS</b>	

STEPS | ULTRA ZONE | WI FI | HI-FI WI-FI STEREO | HEAT PUMP

### DIMENSIONS

2300 x 2300 x 920mm

### LITRES

1490L

### DRY WEIGHT

413kg

### TOTAL WEIGHT

1903kg

### MINIMUM POWER

32 Amp Hydro

15

YEAR STRUCTURAL  
WARRANTY

5

YEAR ACRYLIC  
WARRANTY

5

YEAR JET  
WARRANTY



## MONACO

	HYDRO MODEL	PRO MODEL
<b>SEATING</b>	6	6
<b>PUMPS</b>		
<b>MASSAGE PUMP/S</b>	2 x 3hp (4.8bhp)	3 x 3hp (4.8bhp)
<b>AIR MASSAGE PUMP</b>	400W Preheated Blower	400W Preheated Blower
<b>FILTRATION PUMP</b>	1 x Power Saver WTC	1 x Power Saver WTC
<b>JETS</b>		
<b>TOTAL JETS</b>	77	77
<b>WATER JETS</b>	58	60
<b>AIR JETS</b>	18	16
<b>SOLE THERAPY JETS</b>	1	1
<b>FILTRATION &amp; SANITISATION</b>		
<b>FILTRATION</b>	100sqft	100sqft
<b>SANITISATION</b>	Ozone Mixing Chamber	Ozone Mixing Chamber
<b>CONTROLS</b>		
<b>CONTROLLER</b>	Gecko YE5 K.1001	Gecko YE5 K.1001
<b>HEATER</b>	3KW Stainless steel	3KW Stainless steel
<b>FEATURES</b>		
<b>INSULATION</b>	7-Layer Insulation	7-Layer Insulation
<b>WATERFALLS</b>	Cascade and 3 x Roman	Cascade and 3 x Roman
<b>LIGHTING</b>	1 x Large & Waterlevel LED's	1 x Large & Waterlevel LED's
<b>STAINLESS STEEL JET TRIMS</b>	Standard	Standard
<b>LOCKABLE HARDCOVER</b>	Luxury	Luxury
<b>BASE</b>	Solid ABS Base	Solid ABS Base
<b>POWER SUPPLY</b>	32 Amp	32 Amp
<b>OPTIONAL EXTRAS</b>		

### DIMENSIONS

2400 x 2300 x 920mm

### LITRES

1650L

### DRY WEIGHT

446kg

### TOTAL WEIGHT

2096kg

### MINIMUM POWER

32 Amp Hydro  
32 Amp Pro

15

YEAR STRUCTURAL WARRANTY

5

YEAR ACRYLIC WARRANTY

5

YEAR JET WARRANTY

STEPS | ULTRA ZONE | WI FI | HI-FI WI-FI STEREO | HEAT PUMP



## ISLANDER

	HYDRO MODEL	PRO MODEL
<b>SEATING</b>	9	9
<b>PUMPS</b>		
<b>MASSAGE PUMP/S</b>	2 x 3hp (4.8bhp)	3 x 3hp (4.8bhp)
<b>AIR MASSAGE PUMP</b>	400W Preheated Blower	400W Preheated Blower
<b>FILTRATION PUMP</b>	1 x Power Saver WTC	1 x Power Saver WTC
<b>JETS</b>		
<b>TOTAL JETS</b>	84	85
<b>WATER JETS</b>	72	72
<b>AIR JETS</b>	12	12
<b>SOLE THERAPY JETS</b>	N/A	1
<b>FILTRATION &amp; SANITISATION</b>		
<b>FILTRATION</b>	100sqft	100sqft
<b>SANITISATION</b>	Ozone Mixing Chamber	Ozone Mixing Chamber
<b>CONTROLS</b>		
<b>CONTROLLER</b>	Gecko YE5 K.1001	Gecko YE5 K.1001
<b>HEATER</b>	3KW Stainless steel	3KW Stainless steel
<b>FEATURES</b>		
<b>INSULATION</b>	7-Layer Insulation	7-Layer Insulation
<b>WATERFALLS</b>	3 x Roman	3 x Roman
<b>LIGHTING</b>	1 x Large & Waterlevel LED's	1 x Large & Waterlevel LED's
<b>STAINLESS STEEL JET TRIMS</b>	Standard	Standard
<b>LOCKABLE HARDCOVER</b>	Luxury	Luxury
<b>BASE</b>	Solid ABS Base	Solid ABS Base
<b>POWER SUPPLY</b>	32 Amp	32 Amp
<b>OPTIONAL EXTRAS</b>		

STEPS | ULTRA ZONE | WI FI | HI-FI WI-FI STEREO | HEAT PUMP

### DIMENSIONS

3000 x 2400 x 970mm

### LITRES

2360L

### DRY WEIGHT

565kg

### TOTAL WEIGHT

2925kg

### MINIMUM POWER

32 Amp Hydro  
32 Amp Pro

15

YEAR STRUCTURAL  
WARRANTY

5

YEAR ACRYLIC  
WARRANTY

5

YEAR JET  
WARRANTY



## WHITEHAVEN

	PRO MODEL	ELITE MODEL
<b>SEATING</b>	10	10
<b>PUMPS</b>		
<b>MASSAGE PUMP/S</b>	3 x 3hp (4.8bhp)	4 x 2.5hp (4.8bhp)
<b>AIR MASSAGE PUMP</b>	400W Preheated Blower	400W Preheated Blower
<b>FILTRATION PUMP</b>	1 x Power Saver WTC	1 x Power Saver WTC
<b>JETS</b>		
<b>TOTAL JETS</b>	96	98
<b>WATER JETS</b>	78	78
<b>AIR JETS</b>	18	18
<b>SWIM JETS</b>	N/A	2
<b>FILTRATION &amp; SANITISATION</b>		
<b>FILTRATION</b>	100sqft	100sqft
<b>SANITISATION</b>	Ozone Mixing Chamber	Ozone Mixing Chamber
<b>CONTROLS</b>		
<b>CONTROLLER</b>	Gecko YE5 K.1001	Gecko YE5 K.1001
<b>HEATER</b>	3KW Stainless steel	3KW Stainless steel
<b>FEATURES</b>		
<b>INSULATION</b>	7-Layer Insulation	7-Layer Insulation
<b>WATERFALLS</b>	Cascade and 3 x Roman	Cascade and 3 x Roman
<b>LIGHTING</b>	1 x Large & Waterlevel LED's	1 x Large & Waterlevel LED's
<b>STAINLESS STEEL JET TRIMS</b>	Standard	Standard
<b>LOCKABLE HARDCOVER</b>	Luxury	Luxury
<b>BASE</b>	Solid ABS Base	Solid ABS Base
<b>POWER SUPPLY</b>	32 Amp	40 Amp
<b>OPTIONAL EXTRAS</b>		

### DIMENSIONS

2300 x 3500 x 970mm

### LITRES

2700L

### DRY WEIGHT

700kg

### TOTAL WEIGHT

3400kg

### MINIMUM POWER

32 Amp Pro  
40 Amp Elite

15

YEAR STRUCTURAL WARRANTY

5

YEAR ACRYLIC WARRANTY

5

YEAR JET WARRANTY

STEPS | ULTRA ZONE | WI FI | HI-FI WI-FI STEREO | HEAT PUMP





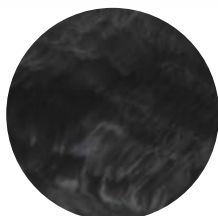
## ACRYLIC AND CABINET COLOURS

In addition to Optix XL Acrylic's excellent gloss and colour retention, surfaces are naturally impervious to microbes. The non-porous nature of Aristech's acrylic defends against the penetration and subsequent growth of microorganisms on its surface. Oasis Spas are shielded against microbes, easy to clean and durable.

*\*Subject to availability*



Sterling Marble



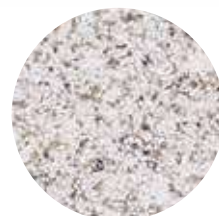
Storm Cloud



Alba



Ocean Wave\*



Sierra\*



Slate Grey



Light Grey

---

## ISLANDER AND WHITEHAVEN ACRYLIC AND CABINET COLOURS



Sterling Marble



Midnight Opal



Ocean Wave



Slate Grey



Mocha

## OPTIONAL UPGRADES



### GECKO IN.TOUCH

The ultimate wireless controller for your spa. In.Touch allows you to access the functions and features of your spa, even if you are away from home. Notifications keep you informed on the status of your spa. Allowing you to control your spa from your phone or tablet.

### ULTRA ZONE SANITIZATION

UltraZone combines Ozone generation with UV-C sterilisation. A powerful oxidiser inactivating bacteria, burning off unwanted organic matter, leaving your spa water safe and clean whilst reducing your normal sanitiser usage by up to 70%.



### GECKO IN.STREAM STEREO

Streamed from your spa, your favorite music never sounded so good! Designed to deliver clean, crisp rich sound in the high-fidelity rendition expected by music lovers, in.stream features Class D amplifier technology to enhance your outdoor audio experience.



## READY FOR USE, ALL YEAR ROUND!

Are you looking for the most energy efficient way of heating your spa? Compared to gas or electric heaters, an air sourced heat pump uses a small amount of energy to generate a large amount of heat output. This energy efficient alternative can save you up to 75% on heating costs.

Apart from heating your spa more efficiently in the cooler months, it also works to cool your water down to a more refreshing temperature in summer. Available from 5kW to 12kW we have a model to suit every spa.





## DREAMTIME LIGHTING

All Oasis Spas come with the dreamtime lighting package, including a Large LED Light and waterlevel perimeter lighting. Included with our Platinum Series are backlit controls and backlit waterfalls.

With 8 different colour sequences and 4 modes, allowing you to flash, fade and step a kaleidoscope of colours throughout your spa. Pair this with the external corner cabinet light and you are all lit up.

Choose a lighter colour spa shell to get the full lighting experience.



## HIGH DENSITY INSULATION

Every spa has a layer of high density “closed cell” (waterproof) foam sprayed onto the inside of the spa shell to stop heat loss from the water. Plus multi-layer insulation on the inside of the “no gap” cabinet panels to reduce power usage further.

- High density thermo-wood cabinet cladding
- High density closed-cell foam on the shell
- Solid ABS Base
- High density thermal hard cover
- “No gap” cabinet

## WTC CIRCULATION PUMP

Our high flow WTC circulation pump features low speed operation but delivers a larger flow. Its low speed operation allows it to be less abrasive, long lasting, energy efficient and super quiet. Suitable for continuous filtration and circulation of spas and swim spas. You can be sure your spa meets even the most stringent energy regulations while minimising operating expenses.

## TOUGH BUILT FRAMES

Our “tough built” treated timber frames have triple reinforced corners, cross-bracing and supports under every seat. The entire frame is then protected by chemical treatment, paint and a wrap-around base.

## 100SQFT BOOST FILTRATION

Filtration is a major part of water maintenance so we use a “Max Flow” valve and a huge 100sqft dual cartridge filter system to ensure more water is filtered every day. Then we add dual pump technology – where a 3HP massage pump draws massive amounts of water through the second filter during use to ensure superior filtration and water clarity.

## THERMO-WOOD CABINET

Our high density synthetic wood cabinet has a high level of insulation to stop heat escaping through the walls of your spa cabinet.





## FEATURES AND BENEFITS

### HIGH DENSITY HARD COVER

All Oasis Spas include a high density lockable cover that stops heat loss from the water by trapping heat under the cover making sure it does not escape.

### EASY-CARE JETS

Spinning jets are awesome, but to keep them spinning, most brands of jets have to be removed and cleaned regularly to clear the bearings of grit, chemical residue and body oils. Our jets spin on a floating stainless steel shaft so there are no bearings to fail. The screw in/screw out feature means there are no clips to break. The tough construction also means a long life and resistance against chemicals.





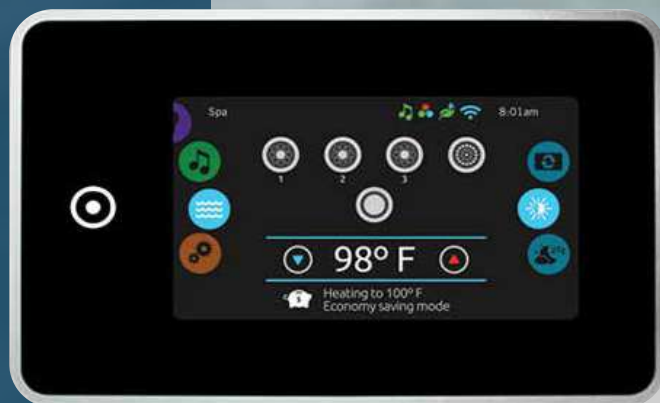
## COLOUR TOUCH SCREEN MULTIFUNCTION CONTROL SYSTEM AS STANDARD

Let us introduce you to the fully equipped K.1001 control system. With its colourful touch display you can say goodbye to classical buttons. Similar to a mobile phone or tablet our K.1001 offers seamless touch display like no other. It's simple to learn and use through the intuitive and attractive interface which is well-arranged and unified.

The K.1001 can control a wide range of Gecko accessories and peripherals such as the in.stream stereo and in.touch wifi directly through the touch pad.

Other features include:

- Seamless 4.3 inch full color LCD
- Maintenance reminders
- 5 watercare modes to choose from. (Away, Standard-beginner, Energy saving, Super energy and Weekender)
- Full compatibility with In.Stream Stereo and In.Touch Wifi
- On Screen reminders
- Direct to function selection
- Easily access settings and accessories





### **POWER SAVER INSULATION SYSTEM**

With a combination of insulation advantages we can guarantee your new Oasis Spa will be cheap to run. From our lockable high density foam hardcover to the insulated well-sealed floor base. Our moulded spa shell includes a 25mm thick spray foam and Insulated cabinet with two layers of insulation completes the spa. ultimate power saver

### **"TOUGH BOND" ACRYLIC SHELL**

Our 8-10mm thick shell made with American Optix XL acrylic with our 6 Layer fibreglass resin construction cured in a temperature and humidity controlled environment. With this process Oasis Spas have the superior strength and durability necessary to last.

### **MORE ROOM AND MORE COMFORT**

Oasis Spas have less wasted space around the edges of the spa which means more internal room for greater comfort. Complete with bigger footwells, there's plenty of room for everyone's feet. Our ergonomic seating plus contoured recliner lounges support your body and stop you from floating.



FIND US ON



[OASISSPAS.COM.AU](http://OASISSPAS.COM.AU)

The products included in the catalogue are for illustration purposes only, and may not always match the specifications of the advertised product, specification are subject to change without notice