



PREMIUM INTERNATIONAL SPAS

## XL SERIES

### Monaco XL Hydro

The Monaco is a large, luxurious dual recliner spa that combines state of the art ergonomic design with premium hydrotherapy jets to provide superior comfort and an awesome massage experience.

[www.oasis spas.com.au](http://www.oasis spas.com.au)



**\$1,800**  
UPGRADES  
FREE

Monaco XL Hydro model shown (with optional waterfalls)		Hydro
Seats		6
Total Massage Jets	+	67
Aqua Stream Jets		48
Air Jets + Volcano Jet		18 + 1
Massage Pumps	3HP	2
Filter and Air Pumps	+	1 + 1
Recliner Lounge		2
Foot Massage		4 seats
Neck Therapy		Y
Stainless Steel Heater		3 Kw
\$1,800 of FREE UPGRADES	<b>FREE</b>	Included

#### PRICE \$

Dimensions		2.3m x 2.4m x 920mm
Litres / Dry / Total	<b>KG</b>	1600L / 476Kg / 2076Kg
Minimum Power	<b>AMPS</b>	32 Amps



**PREMIUM  
INTERNATIONAL  
BRAND WITH  
GLOBAL STRENGTH**

Sold in over 35 Countries.  
Offices in Australia, Europe  
and Asia



**WE OFFER YOU  
3 LEVELS OF SUPPORT  
FOR YOUR TOTAL  
PEACE OF MIND**

Oasis Spas are built and backed by a **Major International Manufacturer** that builds over a dozen different spa brands and distributes to over 35 countries around the world.

Our **Australian Head Office** provides both you and your Oasis Spa dealer with professional help, advice and parts.

And the *Customer Support Plan* provided by your **Local Oasis Spa Dealer** ensures advice, support and knowledge throughout the life of your spa (ask your dealer for more information).



## A BETTER SPA EXPERIENCE

The Ultimate in Relaxation

### MORE ROOM INSIDE

- Clever designs for more internal room and greater comfort
- Bigger footwells so there's plenty of room for everyone's feet



### A BETTER MASSAGE

- Broad stream jets for a smoother massage sensation
- Targeted hydro therapy jets for maximum benefit
- The ultimate back, leg and neck massage experience



### QUIETER

- The same insulation and no gap cabinet that saves you money also makes Oasis Spas super quiet - so you can enjoy total relaxation



### MORE COMFORT

- Ergonomic designs for maximum comfort
- Full body massage recliners that stop you floating



### CREATE THE PERFECT MOOD

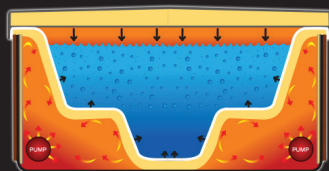
- Use your water level & under water lighting plus aromatherapy to create the ultimate spa experience



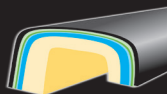
## POWER SAVER TECHNOLOGY

Save thousands over the life of your spa

### POWER SAVER INSULATION SYSTEM



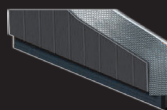
- 25mm thick foam on the shell keeps heat in the spa water (3 x average thickness)



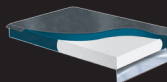
- "No Gap" cabinet keeps heat in and cold air out



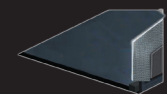
- Insulated cladding plus multi layer insulation on the sides of the cabinet



- Lockable cover with high density foam



- ABS base helps stop heat loss at ground level



### POWER SAVER FILTER PUMP

- Only needs to run 4 hours a day
- High flow - low power draw

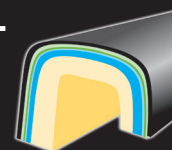


## PREMIUM QUALITY

The Strongest Spas on the Market

### THE THICKEST SHELL ON THE MARKET

- 8-10mm thick, 6 layer laminated construction for maximum strength



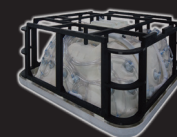
### PREMIUM BEARINGLESS JETS

- No bearings to fail
- No clips to break
- PVC and stainless steel construction for long life



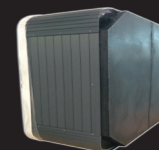
### SUPER TOUGH CONSTRUCTION

- Reinforced footwell
- Tough triple reinforced timber frame
- Oasis Spas are up to 50% heavier than other brands



### ABS BASE

- Seals the base of the spa to stop water and pests from damaging the frame and equipment



### PREMIUM COMPONENTS

- Stainless steel heater
- American "Lucite" acrylic
- Quality RD jets and fittings throughout



## EASY CARE TECHNOLOGY

Spa Care Made Easy

### EASY CARE CD OZONE & MIXING CHAMBER

- Kills germs and breaks down body oils for crystal clear water and reduced chemical use



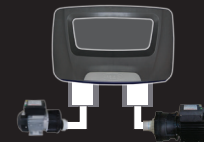
### EASY CARE JETS

- Easy to remove
- Self cleaning - never stop spinning



### EASY CARE FILTRATION

- Our "Dual Pump" technology and "Max Flow Valve" maximise filtration and water clarity
- Designed to boost filtration by up to 6 x while using your spa



### EASY CARE CABINET

- UV protected synthetic timber
- Just spray the cabinet with a hose if it gets dirty



### CHLORINE FREE WATER

- Easy to use
- No chlorine and no irritations
- No need to shower after spa use



**\$1,800 OF FREE UPGRADES**



### WATER LEVEL LIGHTING

Value \$395



### STAINLESS STEEL JET TRIMS

Value \$595



### EASY CARE CD OZONE SYSTEM & MIXING CHAMBER

Value \$595



### ADJUSTABLE AROMATHERAPY SYSTEM

Value \$195

